

# Mining Industry Cultural Resources Management and Planning

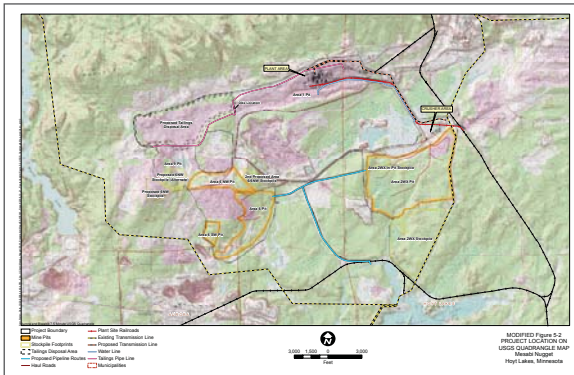
*Throughout the Upper Midwest*



Hill Annex Mine ca. 1940



Hibbing, Minnesota, 2008



Hill Annex Mine ca. 1941



Erie Mining Company Facility, 1955

The 106 Group has extensive experience studying and reviewing effects of proposed projects to historic mines, including historic structures, archaeological resources, and cultural landscapes. Examples include:

- Minnesota Steel Industries, Nashwauk Development, Itasca County, Minnesota**  
 Proposed to reactivate the former Butler Taconite mine and tailings basin, and construct a new metallic mineral processing facility.
- Itasca County Regional Rail Authority New Rail Line, Minnesota**  
 Proposed to construct approximately 8.6 miles of new rail line to connect an existing mainline railroad near Taconite to the Essar Steel Minnesota, LLC taconite mine and steel mill site in Nashwauk.
- PolyMet, Iron Range, St. Louis County, Minnesota**  
 The NorthMet project, located near the Mesabi Iron Range, is a 4,162-acre mining area proposed for redevelopment. The deposit is the largest undeveloped non-ferrous metal project in the U.S. that contains platinum, palladium, gold, copper, nickel, cobalt, and silver.
- Mesabi Nugget, near Hoyt Lakes, St. Louis County, Minnesota**  
 Plans were to reactivate the former LTV Steel Mining Company mine and construct a new crusher and concentrator that will use in-pit tailings disposal.
- Iron Range Community Comprehensive Plan, Minnesota**  
 Chisholm, Hibbing and Balkan Townships, and Iron World, came together to create one, unified economic development effort. 106 Group was part of the comprehensive planning team.



Gitchi Gami Trail, 2002