

CSAH 14/TH 52 Interchange Project Architectural History Survey

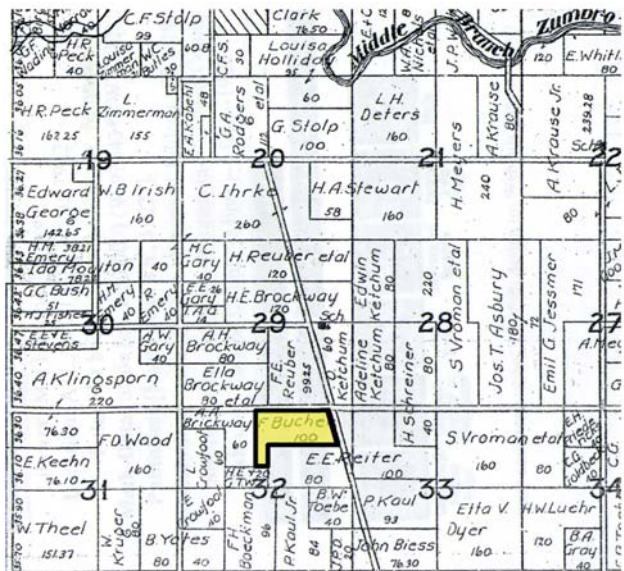
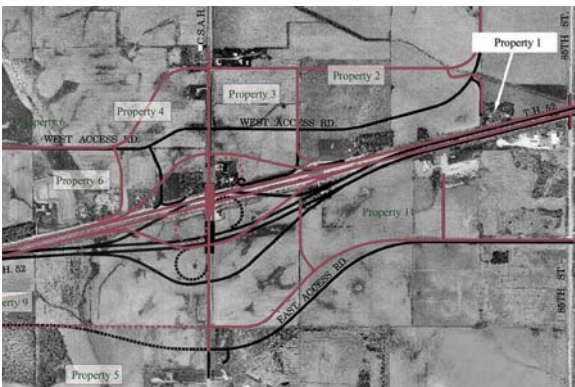
Olmsted County, Minnesota



The 106 Group conducted an architectural history investigation for the proposed County State Aid Highway (CSAH) 14 and Trunk Highway (TH) 52 interchange project in Olmsted County, Minnesota, which spanned the full range of investigative and documentation levels beginning with a preliminary assessment of potentially eligible resources, progressing to a Phase I survey of nine properties, followed by an intensive investigation of one farmstead.



The Williams-Rucker farmstead was recommended as eligible for the National Register of Historic Places under Criterion A for its exemplary representation of local diversified farming practices that included a full complement of historic outbuildings. Because the proposed road construction project was found to have an adverse effect, the 106 Group conducted an intensive study of the farmstead and its history, which included archival research and oral histories, as mitigation.



Historic acreage associated as shown on 1922 Plat Map

